

# i-ROBO Smart Actuator

## EBA

▶ Open BELT TYPE ▶ Size : 45 / 65 ▶ Standard stroke maximum 2500mm

### ■ Main Drive Belt

- S3M, S5M 우레탄 벨트를 사용하여 균일한 속도 유지와 가벼운 무게로 정밀 시스템에 적합
- Belt Specification

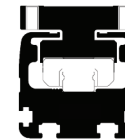
	BELT TYPE	Width
EBA 45	S3M	12
EBA 65	S5M	20

### ■ LM Guide

- 2조열, 4조열의 전동면을 붙이 외전, 순환하여 블록에 조립된 엔드캡을 통해 볼열을 순환
- 볼리테이너 타입 (볼끼리의 상호 마찰이 없어지고, 볼은 균등하게 정렬되어 운동함)

### ■ Structure of Base

- 고강성 컴팩트한 구조
- User 장비와 맞춤 고정기 용이한 Base에 T-slot 방식



### ■ Motor

- STEP motor 및 SERVO motor의 다양한 모터 사용



### ■ Zero Backlash Disk Coupling

- 비틀림 강성이 커 고정밀 위치 제어가 가능
- 클램프 타입을 사용하여 Motor 조립이 간편
- 낮은 관성으로 소형 Motor 적용이 용이

### ■ Pulley and Timing Belt

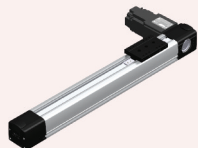
- 2개의 Pulley와 Timing Belt로 구성
- Tension Guide BRG'으로 장력 조절하여 Belt 탈주 및 장력 풀림 방지

### ■ Structure of External Sensor

- Actuator의 외부에 근접센서를 부착하여 조립 및 유지 관리가 간편
- 외장형 센서 : EE-SX674(OMRON)



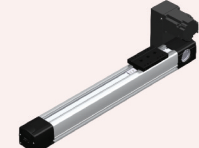
SL : Straight left motor mount



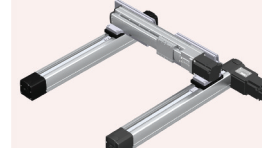
SR : Straight right motor mount



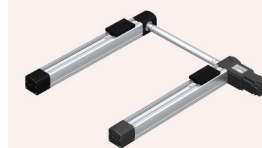
PLU : Parallel left upper motor mount



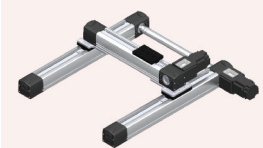
PRU : Parallel right upper motor mount



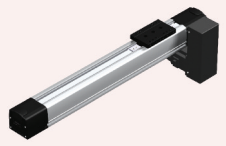
XIY-A type



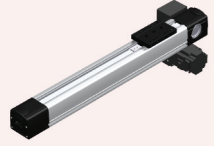
XI type



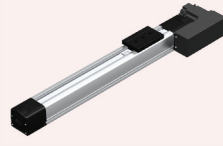
XIY-B type



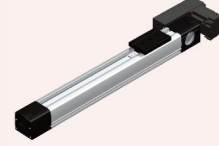
PLB : Parallel left bottom motor mount



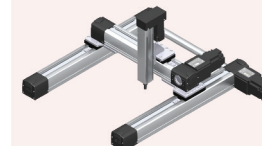
PRB : Parallel right bottom motor mount



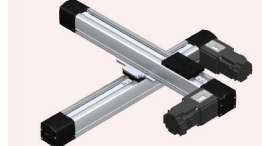
PLF : Parallel left front motor mount



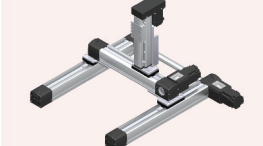
PRF : Parallel right front motor mount



XIYZ-B type

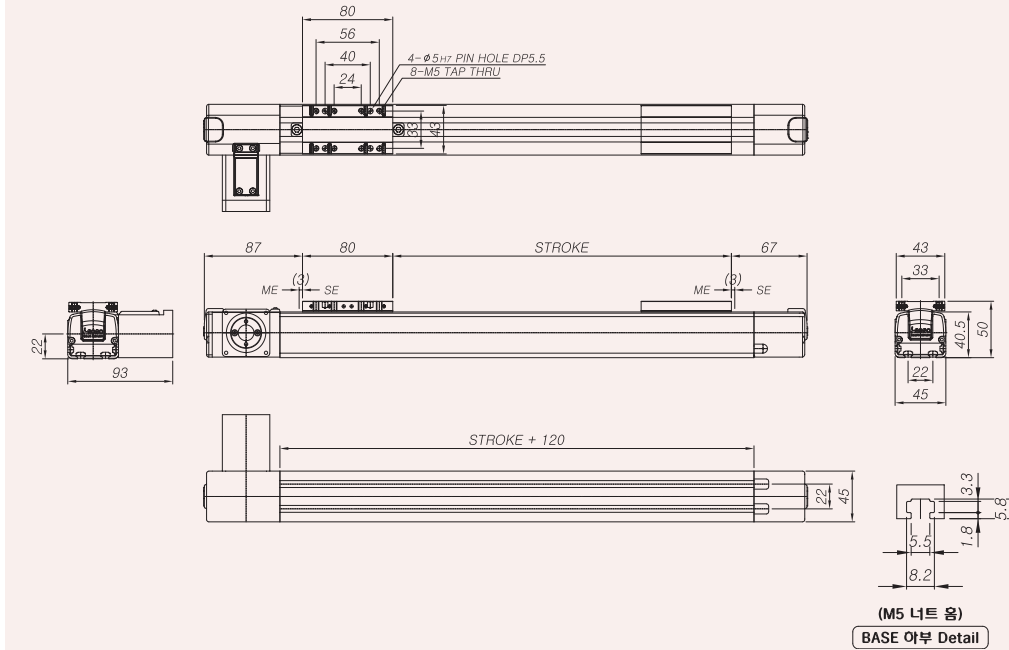


XY-C type



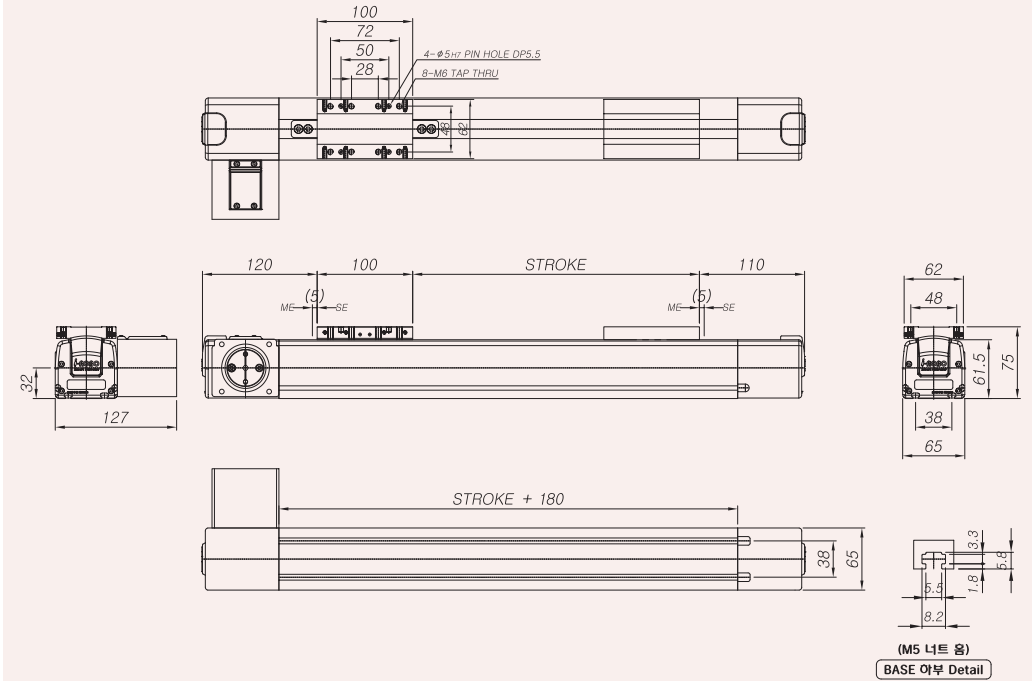
XIYZ-F type

## EBA 45



Model	Width (mm)	Motor Rated Output	Lead (mm)	Max Load (kg)	Max Stroke (mm)	Max Speed (sec)
EBA45	45	□42(600rpm)	75	2	300~1500	750
		□60(600rpm)	75	10		750
		100W(3000rpm)	25(R3)	4.5		1250

## EBA 65



Model	Width (mm)	Motor Rated Output	Lead (mm)	Max Load (kg)	Max Stroke (mm)	Max Speed (sec)
EBA65	65	200W(3000rpm)	65(28/56)	2.5	300~2500	3250
			43(R3)	5		2160
			26(R5)	15		1300

### 스트로크 및 금액 [센서포함]

MODEL		300	400	500	600	700	800	900	1000	1100	1200	1300	1400	1500
EBA45	직결형 + 센서	459,000	480,000	500,000	539,000	576,000	616,000	657,000	696,000	733,000	771,000	810,000	847,000	886,000
	병렬형 + 센서	529,000	550,000	570,000	609,000	646,000	686,000	727,000	766,000	803,000	841,000	880,000	917,000	956,000

MODEL		300	400	500	600	700	800	900	1000	1100	1200	1300	1400	1500	2000	2500
EBA65	직결형 + 센서	592,000	619,000	646,000	688,000	731,000	774,000	818,000	861,000	904,000	945,000	988,000	1,031,000	1,072,000	1,366,000	1,658,000
	병렬형 + 센서	667,000	694,000	721,000	763,000	806,000	849,000	893,000	936,000	979,000	1,020,000	1,063,000	1,106,000	1,147,000	1,441,000	1,733,000

▶ 스트로크, 표면처리 등 비표준 및 옵션 사양을 적용 시 당사로 문의 바랍니다. ▶ 홈페이지에서 각 제품별 도면(2D/3D) 및 카다로그를 다운로드 받으실 수 있습니다.