

SD700 고성능 서보 시스템



■ 회사소개



산업 자동화 제품의 R&D, 생산 및 판매에 종사하는 하이테크 기업인 VEICHI Electric은 설립 이후 항상 전기 구동 및 산업 제어 분야에 집중해 왔습니다. 이것은 '장쑤성 기업 기술 센터', '장쑤 민간 기술 기업', '장쑤성 전문 및 새로운 거대 기업', '장쑤성 엔지니어링 기술 연구 센터', '쑤저우 가젤 기업' 및 '경쟁 브랜드'로 등재되었습니다. 모션 제어 분야". 수년간의 독립적인 R&D와 혁신 끝에 VEICHI는 일련의 독립적인 지적 재산을 개발했습니다. 2021년 12월 28일까지 28개의 발명 특허를 포함하여 총 124개의 특허를 획득하였습니다. VEICHI는 쑤저우와 선전에 R&D 및 생산 기지를 보유하고 있으며 인도에 전액 출자 자회사를 설립했습니다. 현재 회사의 사업은 많은 국가와 지역을 포괄하며 글로벌 고객에게 경쟁력 있고 안전하며 신뢰할 수 있는 제품과 서비스를 제공하고 있습니다. 0.4KW ~ 1,200KW의 인버터, 50W ~ 200KW의 서보 시스템, 모션 컨트롤러, PLC 및 HMI를 비롯한 다양한 제품을 리프팅 및 광산 장비, 철도 운송, 공작 기계, 압축기, 플라스틱, 태양열 워터 펌프, 건축 자재, 로봇 또는 조작기, 인쇄 및 포장, 섬유 및 화학 섬유, 금속공학, 도시, 석유, 화학 및 기타 산업. VEICHI는 중국에 19개의 서비스 센터를 설립하고 전국의 31개 성 및 홍콩, 마카오 및 대만 지역을 포괄하는 139개의 채널 딜러를 개발하여 고객에게 고품질의 제품과 효율적인 서비스를 제공하고 있으며, VEICHI는 인버터, 서보 시스템 및 모션 컨트롤러, 지능형 IoT의 핵심 비즈니스를 강화하기 위해 '시장 수요에 따라 기술 혁신을 추진'이라는 비즈니스 철학을 계속 고수할 것이며 항상 고객에게 최고의 상품 및 서비스를 제공할 것입니다. VEICHI는 전기 구동 및 산업 제어의 발전을 촉진하는데 기여하기 위해 노력을 아끼지 않을 것입니다.

더 스마트하고 효율적

SD700 시리즈 고성능 서보 드라이브

최신 소프트웨어
알고리즘 설계

최신 하드웨어
플랫폼 설계

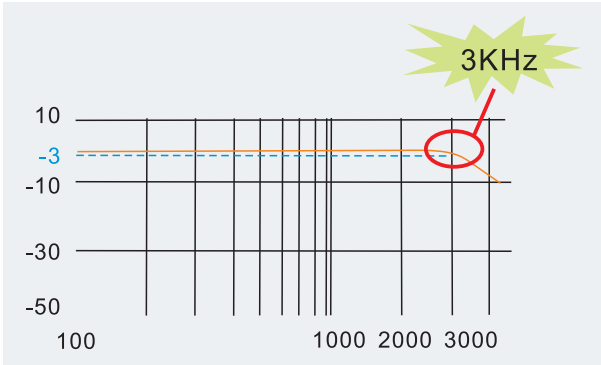
최신 구조의
외관 디자인



제품 특징

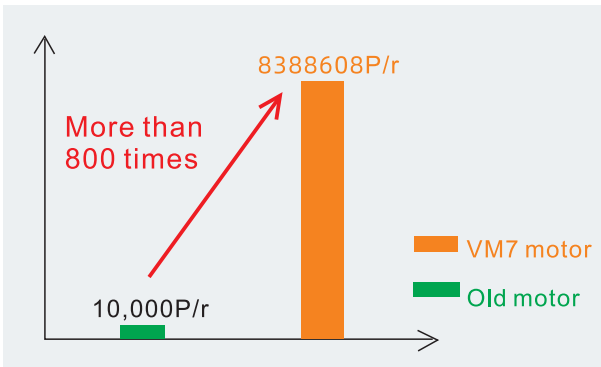
3KHz 속도 루프 응답 대역폭

고유한 전류 알고리즘은 속도 루프 대역폭을 효과적으로 개선하여 조정 시간을 크게 줄이고 생산 효율성을 향상시킬 수 있습니다. 가장 빠른 조정 시간은 1ms에 도달할 수 있습니다.



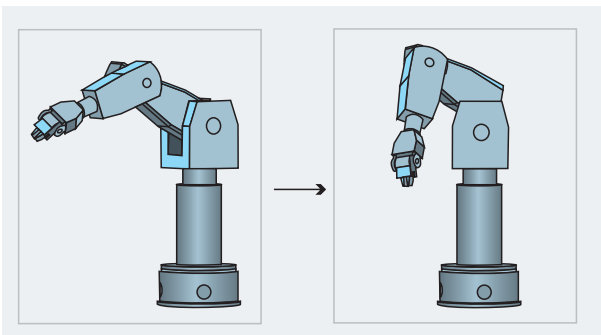
23비트 애플루트 엔코더

표준 23비트 다중 회전 애플루트 인코더는 회전당 8388608 펄스를 가지며 통신 속도는 2.5Mbps에 도달할 수 있습니다. 위치 결정이 더 정확하고 저속이 더 안정적이며 전원 차단 위치가 손실되지 않습니다.



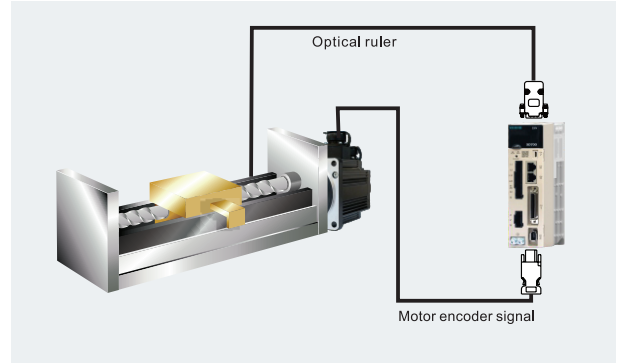
강력한 제어

최신 제어 이론 알고리즘을 채택하여 부하 회전 관성을 30배 이내로 달성합니다.(가공 중 부하 변화도 포함) 매개변수 조정 없이 안정적인 작동을 보장할 수 있으며 설치 후에만 사용할 수 있습니다. 이 기능은 매니플레이터에서 널리 사용됩니다.



완전 폐 루프 모드 지원

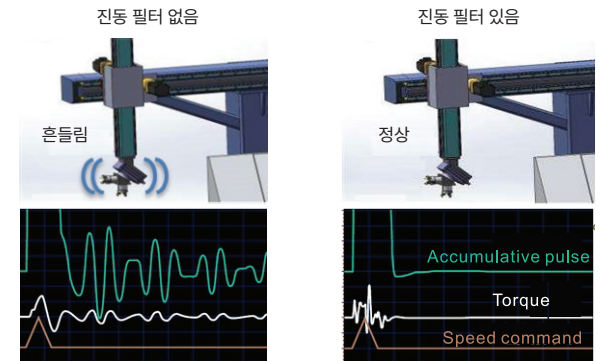
완전 폐 루프 모드는 기계적 전송 간격을 줄이고 실제 위치 정확도를 높이기 위해 외부 두 번째 인코더 또는 격자 눈금자를 지원합니다. (모든 모델에서 지원)



저주파 진동 억제 기능

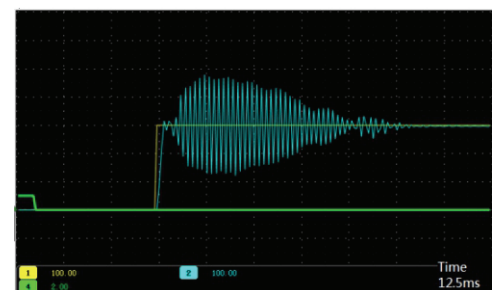
진동 필터는 고유 진동 주파수를 효과적으로 제거하고 정지 축 지터 (슬로싱)

를 크게 줄이고 0~100Hz 주파수에서 진동을 효과적으로 억제하기 위해 PC 소프트웨어를 통해 설정할 수 있습니다. 이 기능은 사출성형 매니플레이터와



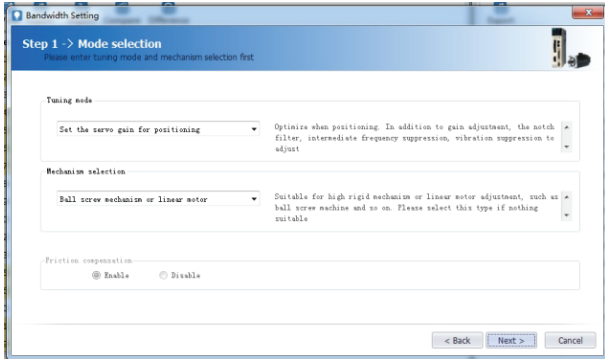
자동 설정 노치 필터

복잡한 진동 주파수 측정 및 분석을 수행할 필요가 없습니다. 노치 필터는 PC 소프트웨어의 단일 매개변수 조정 기능을 통해 빠르게 검색되고 자동으로 설정됩니다. 사용이 간편하며 최단시간은 70ms 이내입니다. 장비의 기계적 공진으로 인한 소음과 진동을 크게 줄여 더 빠른 응답을 얻을 수 있습니다. 이 기능은 CNC 기계에서 널리 사용됩니다.



인텔리전트 설정

자동 게인 조정, 안내 설정 모드, 순차 설정으로 서보 게인 설정을 완료할 수 있습니다. 또한 기계가 최적의 상태에 도달할 수 있도록 다양한 기계적 구조 및 기술적 특성에 대해 더 많은 조정 모드를 제공합니다.



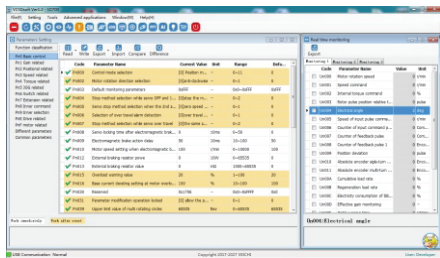
강력한 버스 통신 기능

RS-485, EtherCAT, CANopen, MECHATROLINK-II, MECHATROLINK-III 및 기타 주류 버스 프로토콜을 지원합니다.

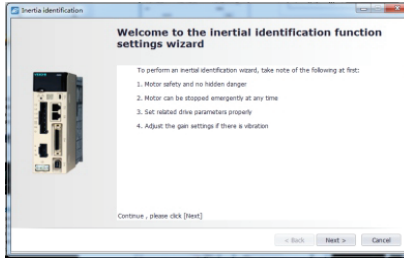


강력한 PC 소프트웨어

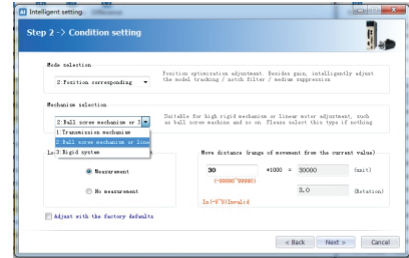
설치가 필요 없는 디버깅 소프트웨어. 드라이브와 컴퓨터 간의 USB 통신은 간단하고 사용하기 쉽습니다.



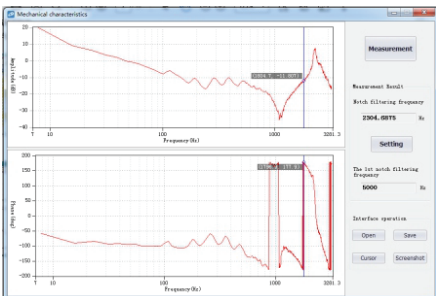
일괄 매개변수 읽기 및 쓰기



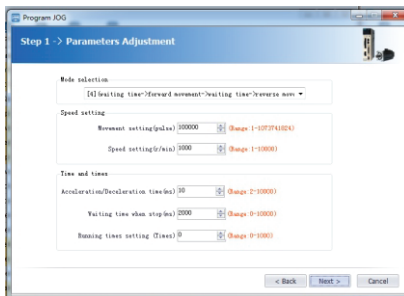
관성 식별



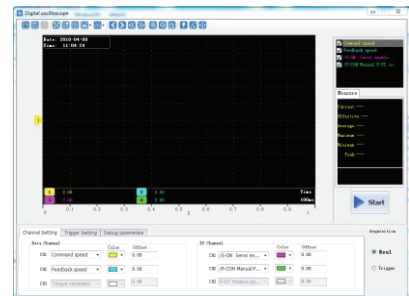
다양한 기계 구조에 대한 PID 매개변수



기계적 특성 분석, 자동 공진 억제



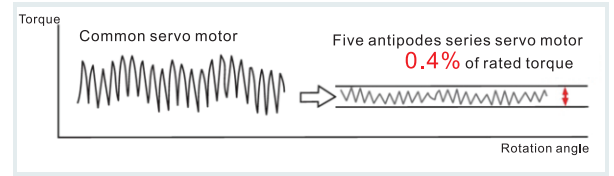
디버깅하기 쉬운 내부 위치 루프 프로그램 JOG



온라인 오실로스코프는 다중 채널로 실시간(125us) 모니터링 가능

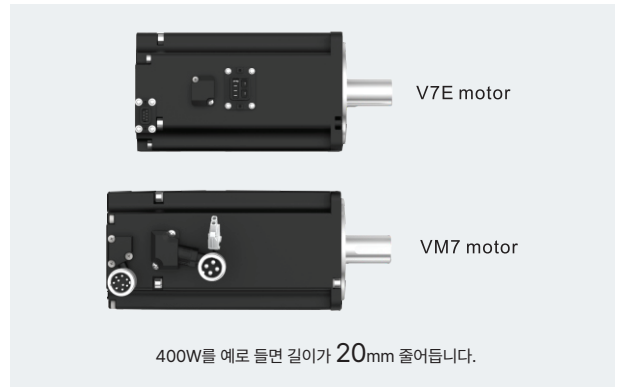
모터 리플 토크 대폭 감소, 저속에서 안정적인 작동

10단 회 전자와 12슬롯 고정자를 채택한 독특한 자기 회로 설계는 슬롯 효과를 효과적으로 억제하고 리플 토크를 크게 줄여 일정한 모터 속도와 저속에서 안정적인 작동을 보장합니다.



모터 소형화, 높은 동적 성능

최신 제조 기술을 채택하여 자기 회로 설계를 최적화하고 자기 손실을 줄여 모터의 높은 동적 응답을 달성합니다. 모터 길이가 약 2cm 단축되고 온도 상승이 5 - 10°C 감소하며 샤프트 점프 정확도가 더 높고 배선이 더 간단하며 전체 시리즈 모터는 IP67 높은 보호를 받았습니다.



400W를 예로 들면 길이가 20mm 줄어듭니다.

SD 700 - 3R3 A - P A □

① ② ③ ④ ⑤ ⑥ ⑦

① SD: Servo product code

⑤ Drive type

P: pulse type

S: standard type

C: CANopen bus type

E: EtherCAT bus type

M: MECHATROLINK □ bus type

L: MECHATROLINK III bus type

N: PROFINET

② 700: High performance servo drive series

⑥ Encoder type

A: Absolute type

B: Biss type

③ Rated current

(A) 220VAC				(D) 400VAC							
1R8	1.8A	120	12A	3R8	3.8A	240	24A	800	80A	421	420A
3R3	3.3A	160	16A	6R0	6.0A	300	30A	121	120A	521	520A
5R5	5.5A			8R4	8.4A	500	50A	171	170A		
7R6	7.6A			110	11A	600	60A	221	220A		
9R5	9.5A			170	17A	700	70A	321	320A		

⑦ Product management code

Standard product default

④ Rated voltage

A □ 220VAC

D □ 400VAC

Code	Model	Pulse input	16 bit analog	Full closed loop	RS485	CANopen	EtherCAT	MECHATRO LINK II	MECHATRO LINK III	PROFINET
P	Pulse type	√	○	√	√	×	×	×	×	×
S	Standard type	√	√	√	√	√	×	×	×	×
C	CANopen type	√	○	√	√	√	×	×	×	×
E	EtherCAT type	×	×	△	√	×	√	×	×	×
M	MECHATROLINK II type	×	×	△	√	×	×	√	×	×
L	MECHATROLINK III type	×	×	△	√	×	×	×	√	×
N	PROFINET type	×	×	△	√	×	×	×	×	√

○ : support 12 bit analog √ : standard configured

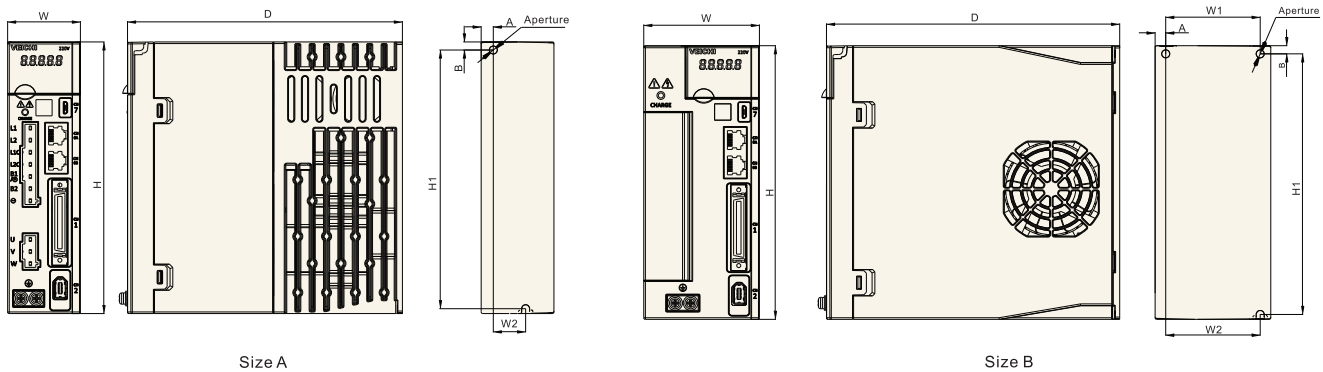
△ : optional

× : not configured

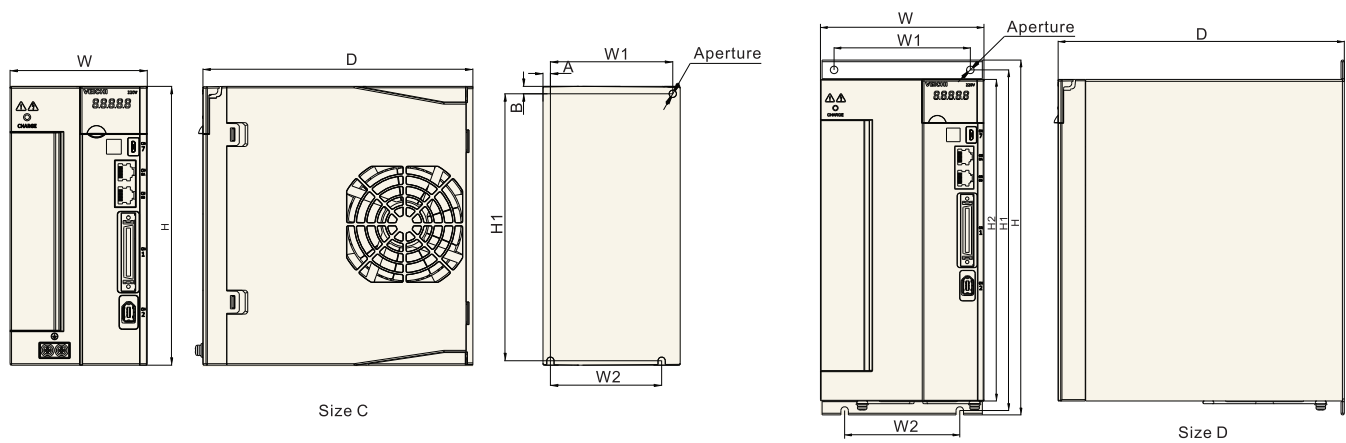
드라이브 파워 및 케이스 종류

Model	Input	Output		Chassis size
	Rated voltage□V□	Rated current□A□	Instantaneous current□A□	
SD700-1R8A	single phase 220	1.8	6.3	A
SD700-3R3A	single phase 220	3.3	11.6	
SD700-5R5A	single / three phase 220	5.5	16.5	
SD700-7R6A	single / three phase 220	7.6	22.8	B
SD700-9R5A	three phase 220	9.5	23.8	
SD700-120A	three phase 220	12.0	36.0	
SD700-160A	three phase 220	16.0	40.0	C
SD700-2R5D	three phase 400	2.5	7.5	
SD700-3R8D	three phase 400	3.8	11.4	
SD700-6R0D	three phase 400	6.0	18.0	C
SD700-8R4D	three phase 400	8.4	25.2	
SD700-110D	three phase 400	11.0	27.5	
SD700-170D	three phase 400	17.0	42.5	D
SD700-240D	three phase 400	24.0	60.0	
SD700-300D	three phase 400	30.0	70.0	
SD700-500D	three phase 400	50.0	115.0	E
SD700-600D	three phase 400	60.0	120.0	
SD700-700D	three phase 400	70.0	140.0	
SD700-800D	three phase 400	80.0	160.0	F
SD700-121D	three phase 400	120.0	240.0	
SD700-171D	three phase 400	170.0	340.0	
SD700-221D	three phase 400	220.0	440.0	
SD700-321D	three phase 400	320.0	640.0	
SD700-421D	three phase 400	420.0	840.0	
SD700-521D	three phase 400	520.0	1040.0	

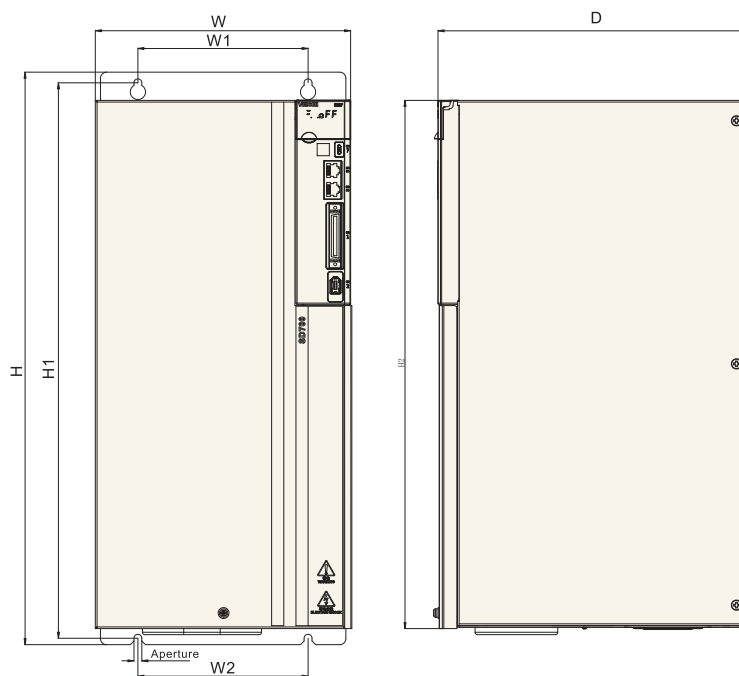
드라이브 외관 및 설치 치수



Chassis size	Model	Overall dimension(mm)			Installation dimension (mm)						Aperture
		W	H	D	W1	W2	H1	H2	A	B	
A	SD700-1R1A-**-	45	168	170	\	20	160	\	7.5	5	2-M4
	SD700-1R8A-**-										
	SD700-3R3A-**-										
B	SD700-5R5A-**-	71	168	180	58	58	160	\	6.5	5	3-M4
	SD700-7R6A-**-										
	SD700-9R5A-**-										
	SD700-2R5D-**-										
	SD700-3R8D-**-										



Chassis size	Model	Overall dimension (mm)			Installation dimension (mm)						Aperture
		W	H	D	W1	W2	H1	H2	A	B	
C	SD700-120A-**-	92.5	188	182	82.5	75	180	\	5	5	3-M4
	SD700-160A-**-										
	SD700-6R0D-**-										
	SD700-8R4D-**-										
	SD700-110D-**-										
D	SD700-170D-**-	120	260	210	100	84.5	250	236	\	\	4-M5
	SD700-240D-**-										
	SD700-300D-**-										



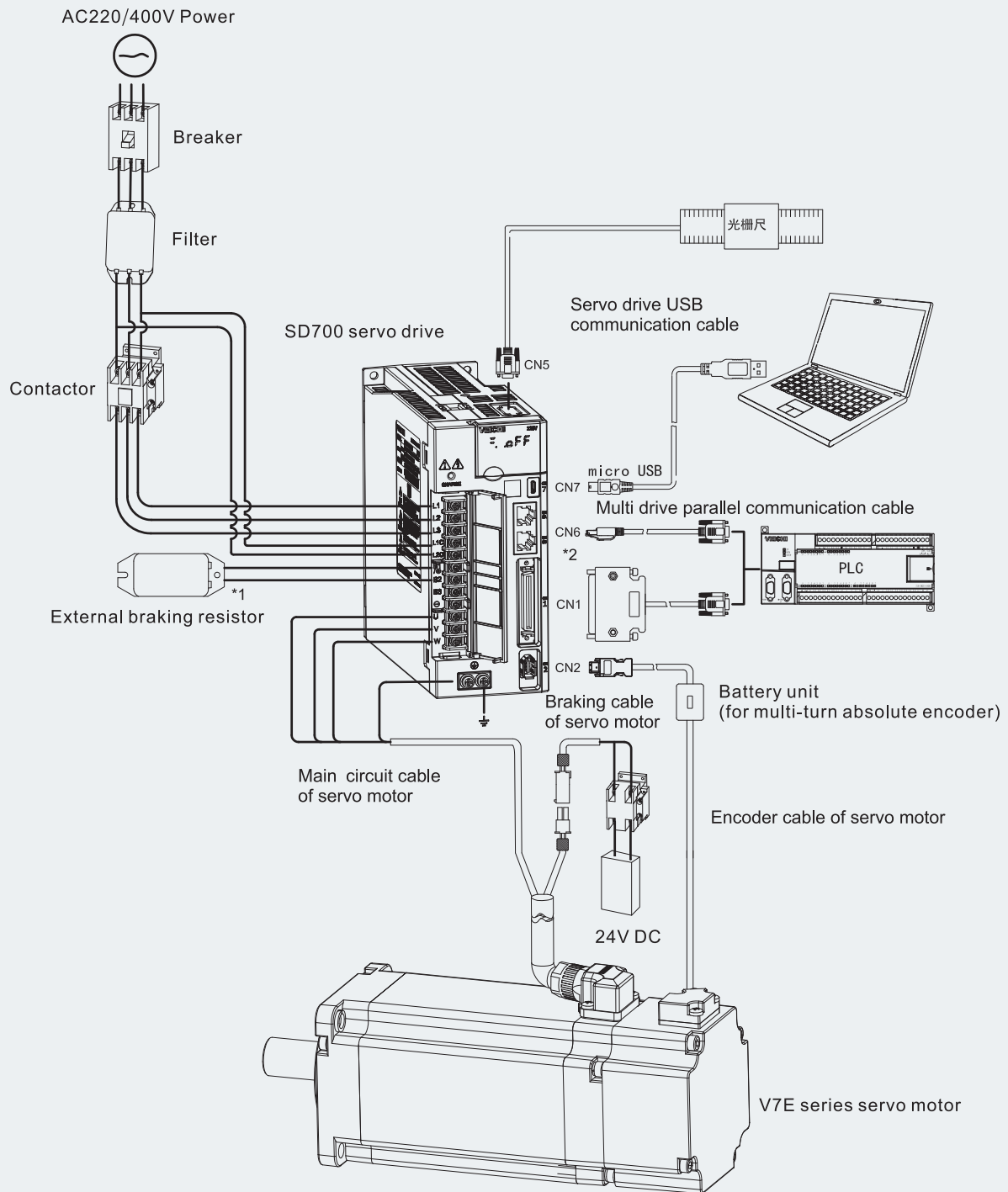
Chassis size	Model	Overall dimension (mm)			Installation dimension (mm)						Aperture
		W	H	D	W1	W2	H1	H2	A	B	
E	SD700-500D-**-	210	471	254	140	140	457	434.5	\	\	4-M6
	SD700-600D-**-										
F	SD700-700D-**-	240	558	310	176	176	544	520	\	\	4-M6
	SD700-800D-**-										
	SD700-121D-**-										
	SD700-171D-**-	270	638	350	195	195	615	580	\	\	4-M10
	SD700-221D-**-	350	738	405	220	220	715	680	\	\	4-M10
	SD700-321D-**-	360	940	495	200	200	911	880	\	\	4-M18
	SD700-421D-**-	370	1140	565	200	200	1111	1080	\	\	4-M18
	SD700-521D-**-	420	1250	590	240	240	1213	1180	\	\	4-M20

드라이브 사양

Items			Specifications	
Control mode			IGBT PWM control; sine wave current drive mode	
Feedback	Rotating motor combination		Serial Communication Type Encoder: 17-bit, 23-bit absolute encoder	
	Ambient temperature		-5℃ ~ 55℃(derating use at 55℃ ~ 60℃)	
	Storage temperature		-20℃ ~ 85℃	
	Ambient humidity		Below 95%RH (no freezing, no condensation)	
	Storage humidity		Below 95%RH (no freezing, no condensation)	
	Vibration resistance		4.9m/s²	
	Impact resistance		19.6m/s²	
	Protection class		IP20	
	Cleanliness		No corrosive gases or flammable gases	
			No water, oil or chemicals	
			Environment with less dust, ash, salt, and metal powders	
	Altitude		Below 1000m (derating use at 1000m to 2000m)	
	Others		No static interference, strong electric field, strong magnetic sound, radiation and so on	
Applicable standard			EN 61800-5-1:2007	EN 61800-3:2004/A1:2012
Installation type			Base mounting type: all models	
			Shelf mounting type: all models	
Performance	Speed control range		1: 6000 (the lower limit of speed control range is the value under the condition of not stop with rated torque load)	
	Speed fluctuation rate	Load fluctuation	Below rated speed ±0.01% (load fluctuation:0%~100%)	
		Voltage fluctuation	Rated speed 0% (rated voltage±10%)	
		Temperature fluctuation	Below rated speed ±0.1% (temperature fluctuation:25±25℃)	
	Torque control accuracy		±1%	
Soft start time setting			0~30s (acceleration and deceleration can be set separately)	
Communication function	Host communication	Communication mode	Rs485, CANopen, EtherCAT, MECHATROLINK-II, MECHATROLINK-III	
		Axis address setting	Parameters setting	
	USB communication	Equipment connection	Computer	
			According to USB1.1 specifications(12M)	
Display function			CHARGE indicator	
Keypad operator function			Button switch ×4	
Input/output signal	Encoder pulse division output		A phase, B phase, C phase: number of pulse frequency-division output for linear drive can be arbitrarily set	
	Sequential control input signal	Assignable input signal	Working voltage range: DC24V±20%	
			Input points:9	
			Input mode: common collector input, common emitter input	
			Input signal	
			Servo ON (/S-ON)	
			P action/P-CON	
			Origin reset deceleration switch signal (/DEC)	
			Forward drive banned (P-OT), reverse drive banned (N-OT)	
			Alarm reset (/ALM-RST)	
			Torque limit selection (/TLC)	
			Speed rotation direction selection signal (/SPD-D)	
			Internal speed setting selection (/SPD-A, /SPD-B)	
			Control mode switch (/C-SEL)	
			Zero position fixed (/ZCLAMP)	
			Command pulse inhibited (/INHIBIT)	
			Magnetic poles detection input (/P-DET) signal	
			Gain switch (/G-SEL)	
			Command pulse input rate switch (/PSEL)	
			Assignable signals and variable positive / negative logic	

Items				Specifications			
Input/ output signal	Sequential control output signal	Fixed output		Working voltage range: DC5V~DC30V			
				Output points:1			
				Output signal:servo alarm (ALM)			
		Assignable output signals		Working voltage range: DC5V~DC30V			
				Output points:3			
				Input method: optocoupler output (isolated)			
				Output signal			
				Position finished(/COIN)			
				Rotational detection (/TGON)			
				Servo ready(S-RDY)			
				Torque limited detection (/CLT)			
				Speed limit detection (/VLT)			
				Brake (/BK)			
				Warning (/WARN)			
				Location nearby (/NEAR)			
				Assignable output signals and change positive / negative logic			
				Dynamic brake			Operate when the main power OFF, servo alarm, servo OFF, Over travel(OT) (only for AC220V A,B model)
Regeneration treatment			Built-in function, see "Brake resistance selection"				
Over travel (OT) prevention			Dynamic brake (DB) stop, DEC stop, or free stop when P-OT, N-OT inputs operate				
Protection function			Over current, over voltage, under voltage, overload, regeneration fault, etc				
Auxiliary function			Gain adjustment, alarm record, JOG operation, origin search, etc				
Security function		Input		STO, base block signal for the power module			
Control	Position control	Feedforward compensation		0%~100%			
		Position arrived range		0~1073741824 Command unit			
		Input signal	Command pulse	Command pulse morphology	Choose one of the following		
				Input morphology	Symbol + pulse sequence, CW+CCW pulse sequence,two-phase pulse of 90°difference		
				Maximum input frequency	Line drive	Linear drive, open collector	
						Symbol + pulse sequence, CW+CCW pulse sequence: 4Mpps	
			Input rate switching	Open collector	Two-phase pulse of 90°difference: 1Mpps		
					Symbol + pulse sequence, CW+CCW pulse sequence: 200Kpps		
			Two-phase pulse of 90°difference: 200Kpps				
			signal clearance		1~100 times		
		signal clearance		Clearance of position deviation			
	speed control	Soft start time setting		0~30s(set acceleration and deceleration respectively)			
		Input signal	Command voltage	Maximum input voltage: ±10V (motor runs forwardly under positive voltage command)			
				Rated speed at DC6V [factory setting]			
				Variable input gain setting			
				Input impedance			
		Internal set speed control	Loop time parameter	30μs			
			Rotation direction selection	Inner speed set selection (/SPD-A,/SDP-B)			
			Speed selection	Rotary direction selection (/SPD-D)			
			Stop or change to other control modes when both sides are OFF				
		Torque control	Input signal	Command voltage	Maximum input voltage: ±10V (motor runs forwardly under positive voltage command)		
					Rated torque at DC3V [factory setting]		
	Variable input gain setting						
	Input impedance			About 14KΩ			
				Loop time setting	16μs		

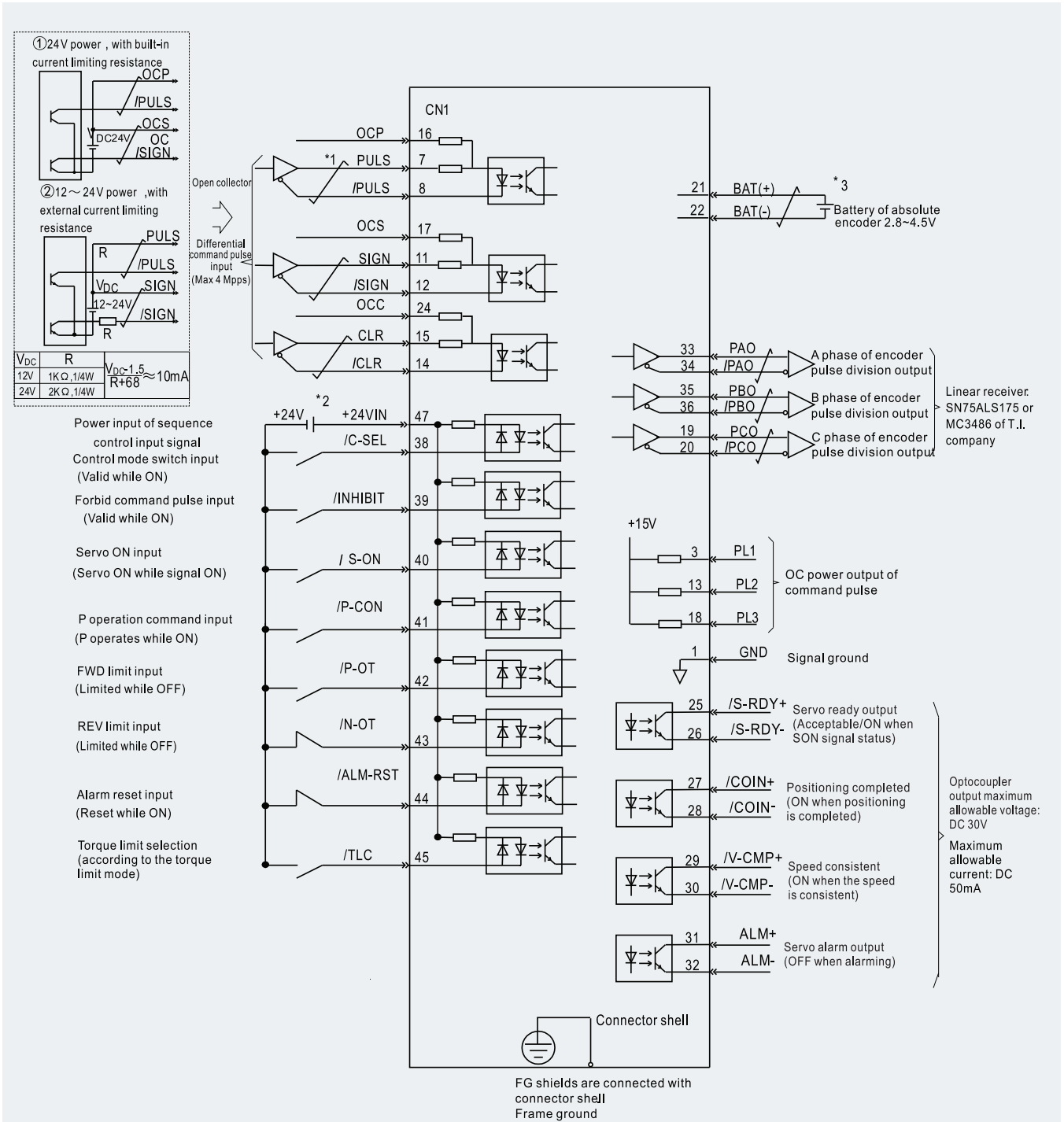
시스템 구성도



*1: 외부 제동 저항을 사용할 때 먼저 B2-B3 단자 사이의 짧은 와이어를 분리하십시오.

*2: CN6A 및 CN6B는 완전히 일관된 두 개의 통신 인터페이스로, 둘 사이에서 자유롭게 사용할 수 있습니다. Ethercat 통신을 제외하고 EtherCAT 버스 배선은 위에서 아래로 연결되어야 합니다.

표준 배선도 - 위치 모드



*1. 트윈스트 실드입니다.

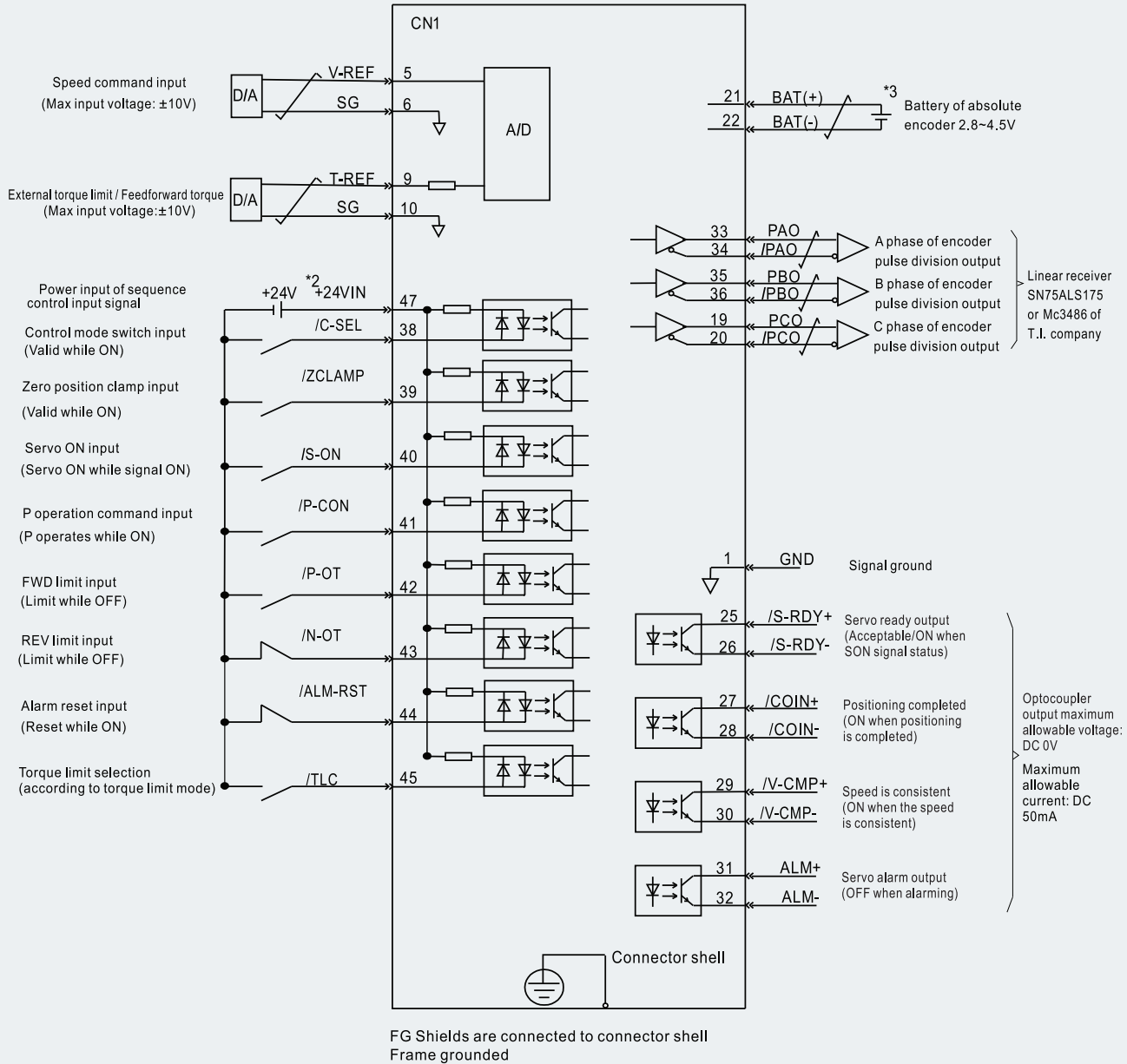
*2. DC24V 전원은 사용자가 준비해야 합니다. DC24V 전원은 이중절연 또는 강화절연 장비를 사용하여야 합니다.

*3. 애플루트 엔코더 사용시 연결됩니다. 그러나 배터리 유닛과 함께 인코더 케이블을 사용하는 동안 CN1-21, CN1-22 핀과 연결하지 마십시오.

*4. 출력 신호는 선형 수신기에서 수신되어야 합니다.

(주) 24V 브레이크 사용 시 DC24V 전원은 입출력 신호(CN1)용 전원과 분리하여 사용하시기 바랍니다. 다른 전원은 별도로 준비하여 주십시오.

표준 배선도 - 속도/토크 모드



*1. 트윈스트 실드입니다.

*2. DC24V 전원은 사용자가 준비해야 합니다. DC24V 전원은 이중절연 또는 강화절연 장비를 사용해야 합니다.

*3. 앵슬루트 엔코더를 사용하여 연결합니다. 그러나 배터리 장치와 함께 인코더 케이블을 사용하는 동안 CN1-21, CN1-22 핀과 연결하지 마십시오.

*4. 출력 신호는 선형 수신기에서 수신되어야 합니다.

(주) 24V 브레이커 사용 시 DC24V 전원은 입출력 신호(CNI)용 전원과 분리되어 있어야 합니다. 다른 전원은 개별적으로 준비하시기 바랍니다.

V7E - L 06 A - 1R0 15 - D 1 ☐

①

②

③

④

⑤

⑥

⑦

⑧

⑨

① Product series
V7E
VM5
VM7

⑥ Rated speed (RPM)
15 : 1500
20: 2000
25: 2500
30: 3000

Motor braking power chart
(Estimated) :

Flange	Braking power
40	7W
60	10W
80	15W
110	15W
130	20W
180	30W

② Inertia level
L: low inertia
M: medium inertia
H: high inertia

⑦ Encoder type
D: 23 bit multi-turn absolute optical encoder
Q: 17 bit single-turn absolute magnetic encoder
R: 17 bit multi-turn absolute magnetic encoder
S: 20 bit multi-turn absolute optical cross shaft encoder

③ Flange
04: 40mm 11: 110mm
06: 60mm 13: 130mm
08: 80mm 18: 180mm
10: 100mm 20: 200mm
26: 260mm 32: 320mm

Mark	Axis		Oil seal		Brake	
	smooth axis	key axis	Yes	No	Yes	No
1		●	●			●
2		●	●		●	

④ Rated voltage
A: 220VAC
D: 380 VAC

⑨ Factory management code

⑤ Rated power

Mark	Power	Mark	Power	Mark	Power	Mark	Power
R05	50W	1R2	1.2KW	4R4	4.4KW	037	37KW
R10	100W	1R3	1.3KW	5R5	5.5KW	045	45KW
R20	200W	1R5	1.5KW	7R5	7.5KW	055	55KW
R40	400W	1R8	1.8KW	011	11KW	075	75KW
R60	600W	2R0	2.0KW	015	15KW	090	90KW
R75	750W	2R3	2.3KW	020	20KW	110	110KW
R85	850W	3R0	3.0KW	022	22KW	150	150KW
1R0	1.0KW	2R9	2.9KW	030	30KW	200	200KW

서보 모터 사양(일반 모델)

V7E model	Voltage (V)	Power	Rated torque (N · m)	Rated speed (RPM)	Max speed (RPM)	Rated current (A)	Max current (A)	Moment of inertia
V7E-L04A-R1030-□1	220	100	0.32	3000	6000	1	3	0.051kg · cm ²
V7E-L04A-R1030-□2	220	100	0.32	3000	6000	1	3	0.052kg · cm ²
V7E-L06A-R2030-□1	220	200	0.64	3000	6000	1.7	5.1	0.18kg · cm ²
V7E-L06A-R2030-□2	220	200	0.64	3000	6000	1.7	5.1	0.2kg · cm ²
V7E-L06A-R4030-□1	220	400	1.27	3000	6000	2.6	7.8	0.34kg · cm ²
V7E-L06A-R4030-□2	220	400	1.27	3000	6000	2.6	7.8	0.36kg · cm ²
V7E-M06A-R4030-□1	220	400	1.27	3000	6000	2.6	7.8	0.67kg · cm ²
V7E-M06A-R4030-□2	220	400	1.27	3000	6000	2.6	7.8	0.69kg · cm ²
V7E-L06A-R6030-□1	220	600	1.91	3000	5000	3.3	9.9	0.51kg · cm ²
V7E-L06A-R6030-□2	220	600	1.91	3000	5000	3.3	9.9	0.53kg · cm ²
V7E-L08A-R7530-□1	220	750	2.38	3000	4000	4.6	13.8	1.02kg · cm ²
V7E-L08A-R7530-□2	220	750	2.38	3000	4000	4.6	13.8	1.13kg · cm ²
V7E-M08A-R7530-□1	220	750	2.38	3000	4000	4.6	13.8	2.3kg · cm ²
V7E-M08A-R7530-□2	220	750	2.38	3000	4000	4.6	13.8	2.41kg · cm ²
V7E-L08A-1R030-□1	220	1000	3.18	3000	5000	5	16.5	1.34kg · cm ²
V7E-L08A-1R030-□2	220	1000	3.18	3000	5000	5	16.5	1.45kg · cm ²
V7E-M11A-1R230-□1	220	1200	3.82	3000	5000	6.3	18.9	4.91kg · cm ²
V7E-M11A-1R230-□2	220	1200	3.82	3000	5000	6.3	18.9	5.52kg · cm ²
V7E-M11A-1R530-□1	220	1500	4.78	3000	5000	7.6	22.8	6.1kg · cm ²
V7E-M11A-1R530-□2	220	1500	4.78	3000	5000	7.6	22.8	6.71kg · cm ²
V7E-M11A-1R830-□1	220	1800	5.73	3000	5000	9.3	27.9	7.28kg · cm ²
V7E-M11A-1R830-□2	220	1800	5.73	3000	5000	9.3	27.9	7.89kg · cm ²
V7E-M13A-R8515-□1	220	850	5.41	1500	3000	5.4	16.2	12.98kg · cm ²
V7E-M13A-R8515-□2	220	850	5.41	1500	3000	5.4	16.2	15.12kg · cm ²
V7E-M13A-1R315-□1	220	1300	8.28	1500	3000	8.2	23.7	18.38kg · cm ²
V7E-M13A-1R315-□2	220	1300	8.28	1500	3000	8.2	23.7	20.52kg · cm ²
V7E-M13A-1R815-□1	220	1800	11.46	1500	3000	10.9	32.7	25.85kg · cm ²
V7E-M13A-1R815-□2	220	1800	11.46	1500	3000	10.9	32.7	27.72kg · cm ²
V7E-M13A-2R315-□1	220	2300	14.64	1500	2000	14	42	36.38kg · cm ²
V7E-M13A-2R315-□2	220	2300	14.64	1500	2000	14	42	38.52kg · cm ²
V7E-M18A-2R915-□1	220	2900	18.46	1500	2000	12	36	49.56kg · cm ²
V7E-M18A-2R915-□2	220	2900	18.46	1500	2000	12	36	56.05kg · cm ²
V7E-M18A-4R415-□1	220	4400	28.01	1500	1800	16	48	68.9kg · cm ²
V7E-M18A-4R415-□2	220	4400	28.01	1500	1800	16	48	75.39kg · cm ²
V7E-M13D-R8515-□1	380	850	5.41	1500	3000	3.3	9.9	12.98kg · cm ²
V7E-M13D-R8515-□2	380	850	5.41	1500	3000	3.3	9.9	15.12kg · cm ²
V7E-M13D-1R315-□1	380	1300	8.28	1500	3000	4.8	14.4	18.38kg · cm ²
V7E-M13D-1R315-□2	380	1300	8.28	1500	3000	4.8	14.4	20.52kg · cm ²
V7E-M13D-1R815-□1	380	1800	11.46	1500	3000	6.6	19.8	25.58kg · cm ²
V7E-M13D-1R815-□2	380	1800	11.46	1500	3000	6.6	19.8	27.72kg · cm ²
V7E-M13D-2R315-□1	380	2300	14.64	1500	2000	8.4	25.2	36.38kg · cm ²
V7E-M13D-2R315-□2	380	2300	14.64	1500	2000	8.4	25.2	38.52kg · cm ²
V7E-M18D-2R915-□1	380	2900	18.46	1500	2000	7.1	17.8	49.56kg · cm ²
V7E-M18D-2R915-□2	380	2900	18.46	1500	2000	7.1	17.8	56.05kg · cm ²

서보 모터 사양(일반 모델)

V7E model	Voltage (V)	Power	Rated torque (N · m)	Rated speed (RPM)	Max speed (RPM)	Rated current (A)	Max current (A)	Moment of inertia
V7E-M18D-4R415-□1	380	4400	28.01	1500	3000	10.9	27.3	68.9kg · cm ²
V7E-M18D-4R415-□2	380	4400	28.01	1500	3000	10.9	27.3	75.39kg · cm ²
V7E-M18D-5R515-□1	380	5500	35.02	1500	2000	13.4	33.5	110.11kg · cm ²
V7E-M18D-5R515-□2	380	5500	35.02	1500	2000	13.4	33.5	116.6kg · cm ²
V7E-M18D-7R515-□1	380	7500	47.75	1500	2000	17	42.5	156.61kg · cm ²
V7E-M18D-7R515-□2	380	7500	47.75	1500	2000	17	42.5	163.09kg · cm ²

서보 모터 사양(특별 모델)

V7E model	Voltage (V)	Power	Rated torque (N · m)	Rated speed (RPM)	Max speed (RPM)	Rated current (A)	Max current (A)	Moment of inertia
V7E-L08A-R7520-□1L	220	750	3.58	2000	2500	3	9	1.34kg · cm ²
V7E-L08A-R7520-□2L	220	750	3.58	2000	2500	3	9	1.45kg · cm ²
V7E-L08A-R7530-□1L	220	750	2.38	3000	4000	3.1	9.3	1.02kg · cm ²
V7E-L08A-R7530-□2L	220	750	2.38	3000	4000	3.1	9.3	1.13kg · cm ²
V7E-M13A-R8515-□1B	220	850	5.41	1500	3000	5.4	16.2	12.98kg · cm ²
V7E-M13A-R8515-□2B	220	850	5.41	1500	3000	5.4	16.2	15.12kg · cm ²
V7E-M13A-1R020-□1	220	1000	4.78	2000	3000	4.9	14.7	12.98kg · cm ²
V7E-M13A-1R020-□2	220	1000	4.78	2000	3000	4.9	14.7	15.12kg · cm ²
V7E-M13A-1R520-□1	220	1500	7.16	2000	3000	7.1	21.3	18.38kg · cm ²
V7E-M13A-1R520-□2	220	1500	7.16	2000	3000	7.1	21.3	20.52kg · cm ²
V7E-M13A-1R815-□1B	220	1800	11.46	1500	3000	10.9	32.7	25.58kg · cm ²
V7E-M13A-1R815-□2B	220	1800	11.46	1500	3000	10.9	32.7	27.72kg · cm ²
V7E-M13A-2R020-□1	220	2000	9.55	2000	3000	9.4	28.2	25.58kg · cm ²
V7E-M13A-2R020-□2	220	2000	9.55	2000	3000	9.4	28.2	27.72kg · cm ²
V7E-M13A-2R315-□1L	220	2300	14.64	1500	2000	9.5	28.5	36.38kg · cm ²
V7E-M13A-2R315-□2L	220	2300	14.64	1500	2000	9.5	28.5	38.52kg · cm ²
V7E-M13A-3R020-□1	220	3000	14.33	2000	3000	14	42	36.38kg · cm ²
V7E-M13A-3R020-□2	220	3000	14.33	2000	3000	14	42	38.52kg · cm ²
V7E-M18A-2R915-□1H	220	2900	18.46	1500	3000	16	40	49.56kg · cm ²
V7E-M18A-2R915-□2H	220	2900	18.46	1500	3000	16	40	56.05kg · cm ²
V7E-M13D-R8515-□1B	380	850	5.41	1500	3000	3.3	9.9	12.98kg · cm ²
V7E-M13D-R8515-□2B	380	850	5.41	1500	3000	3.3	9.9	15.12kg · cm ²
V7E-M13D-1R020-□1	380	1000	4.78	2000	3000	3.2	9.6	12.98kg · cm ²
V7E-M13D-1R020-□2	380	1000	4.78	2000	3000	3.2	9.6	15.12kg · cm ²
V7E-M13D-1R520-□1	380	1000	7.16	2000	3000	4.4	13.2	18.38kg · cm ²
V7E-M13D-1R520-□2	380	1000	7.16	2000	3000	4.4	13.2	20.52kg · cm ²
V7E-M13D-1R815-□1B	380	1800	11.46	1500	3000	6.6	19.8	25.58kg · cm ²
V7E-M13D-1R815-□2B	380	1800	11.46	1500	3000	6.6	19.8	27.72kg · cm ²
V7E-M13D-2R020-□1	380	1000	9.55	2000	3000	5.5	16.5	25.58kg · cm ²
V7E-M13D-2R020-□2	380	1000	9.55	2000	3000	5.5	16.5	27.72kg · cm ²

서보 모터 사양(특별 모델)

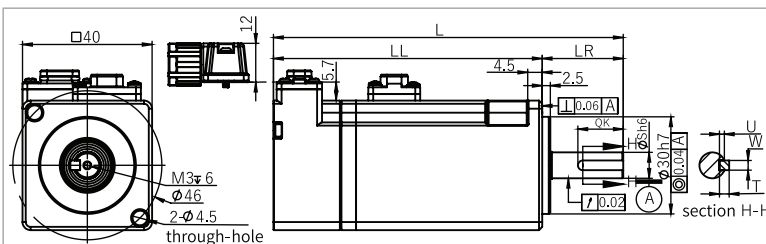
V7E model	Voltage (V)	Power	Rated torque (N · m)	Rated speed (RPM)	Max speed (RPM)	Rated current (A)	Max current (A)	Moment of inertia
V7E-M13D-2R315-□1L	380	2300	14.64	1500	2000	5.6	16.8	36.38kg · cm ²
V7E-M13D-2R315-□2L	380	2300	14.64	1500	2000	5.6	16.8	38.52kg · cm ²
V7E-M13D-3R020-□1	380	3000	14.33	2000	3000	8.3	24.9	36.38kg · cm ²
V7E-M13D-3R020-□2	380	3000	14.33	2000	3000	8.3	24.9	38.52kg · cm ²
V7E-M18D-2R915-□1H	380	2900	18.46	1500	3000	10.7	26.8	49.56kg · cm ²
V7E-M18D-2R915-□2H	380	2900	18.46	1500	3000	10.7	26.8	56.05kg · cm ²
V7E-M18D-4R415-□1H	380	4400	28.01	1500	3000	16.2	40.5	68.9kg · cm ²
V7E-M18D-4R415-□2H	380	4400	28.01	1500	3000	16.2	40.5	75.39kg · cm ²
V7E-M18D-5R515-□1H	380	5500	35.02	1500	3000	19	47.5	110.11kg · cm ²
V7E-M18D-5R515-□2H	380	5500	35.02	1500	3000	19	47.5	116.6kg · cm ²
V7E-M18D-5R515-□1BH	380	5500	35.02	1500	3000	19	47.5	110.11kg · cm ²
V7E-M18D-5R515-□2BH	380	5500	35.02	1500	3000	19	47.5	116.6kg · cm ²
V7E-M18D-7R515-□1H	380	7500	47.75	1500	3000	26	65	156.6kg · cm ²
V7E-M18D-7R515-□2H	380	7500	47.75	1500	3000	26	65	163.09kg · cm ²
V7E-M18D-7R515-□1BH	380	7500	47.75	1500	3000	26	65	156.6kg · cm ²
V7E-M18D-7R515-□2BH	380	7500	47.75	1500	3000	26	65	163.09kg · cm ²

서보 모터 사양(대용량)

V7E model	Voltage (V)	Power	Rated torque (N · m)	Rated speed (RPM)	Max speed (RPM)	Rated current (A)	Max current (A)	Moment of inertia
VM7-M20D-01115-D1FN	380	11000	70	1500	2000	21	42	70kg · cm ²
VM7-M20D-01115-D2FN	380	11000	70	1500	2000	21	42	80kg · cm ²
VM7-M20D-01115-D1FNH	380	11000	70	1500	3000	30	60	70kg · cm ²
VM7-M20D-01515-D1FN	380	15000	96	1500	2000	29	58	100kg · cm ²
VM7-M20D-01515-D2FN	380	15000	96	1500	2000	29	58	110kg · cm ²
VM7-M20D-01515-D2FNH	380	15000	95	1500	3000	34	72	133kg · cm ²
VM7-M20D-02015-D1FN	380	20000	127	1500	2000	38.5	77	147kg · cm ²
VM7-M20D-02015-D2FN	380	20000	127	1500	2000	38.5	77	157kg · cm ²
VM7-M20D-02215-D1FN	380	22000	140	1500	2000	42	84	171kg · cm ²
VM7-M20D-02215-D2FN	380	22000	140	1500	2000	42	85	180kg · cm ²
VM7-M26D-03015-D1FN	380	30000	191	1500	2000	58	116	372kg · cm ²
VM7-M26D-03015-D2FN	380	30000	191	1500	2000	58	116	382kg · cm ²
VM7-M26D-03715-D1FN	380	37000	236	1500	2000	72	144	461kg · cm ²
VM7-M26D-03715-D2FN	380	37000	235	1500	2000	70	151	445kg · cm ²
VM7-M26D-04515-D1FN	380	45000	286	1500	2000	87	174	550kg · cm ²
VM7-M26D-04515-D2FN	380	45000	285	1500	2000	82	177	529kg · cm ²
VM7-M26D-05515-D1FN	380	55000	350	1500	2000	106	212	639kg · cm ²
VM7-M32D-05510-S1FN	380	55000	525	1000	1300	110	215	1370kg · cm ²
VM7-M32D-07510-S1FN	380	75000	716	1000	1300	142	280	1830kg · cm ²
VM7-H40D-07506-S1W	380	75000	1200	600	720	160	352	5294kg · cm ²
VM7-M32D-09010-S1FN	380	90000	859	1000	1300	171	339	2290kg · cm ²
VM7-M32D-10815-S1FN	380	108000	690	1500	2000	206	411	1830kg · cm ²
VM7-M32D-11010-S1FN	380	110000	1050	1000	1300	199	385	2750kg · cm ²

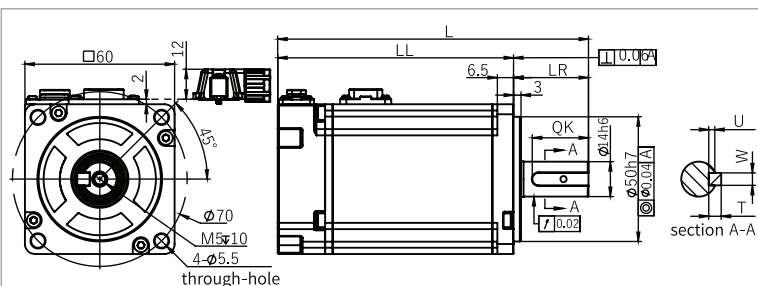
서보 모터 설치 치수

40mm flange



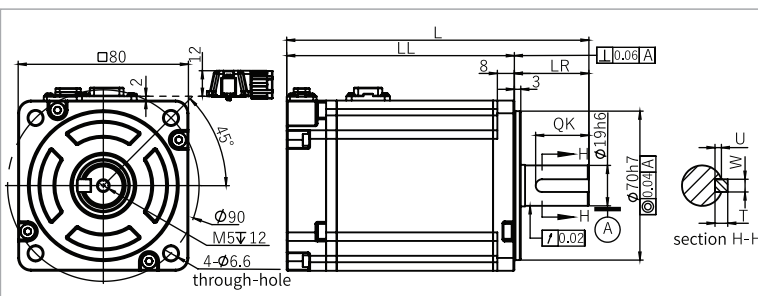
Model	L	LL	LR	S	QK	U	W	T
V7E-L04A-R1030-□1	108	83	25	8	14	1.5	3	3
V7E-L04A-R1030-□2	134	109	25	8	14	1.5	3	3

60mm flange



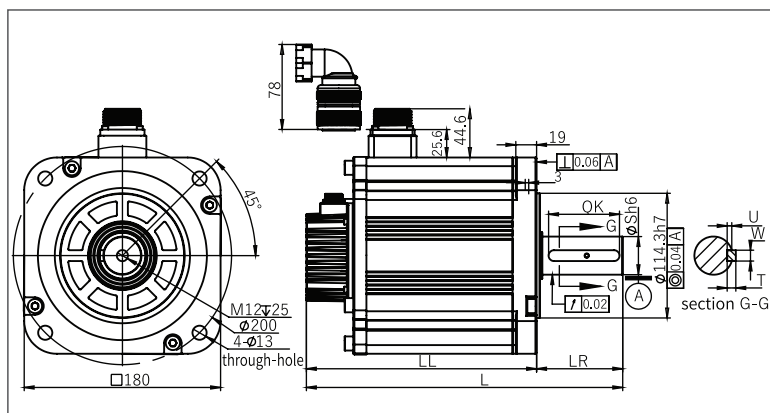
Model	L	LL	LR	S	QK	U	W	T
V7E-L06A-R2030-□1	105.5	75.5	30	14	22.5	2.5	5	5
V7E-L06A-R2030-□2	136.5	106.5	30	14	22.5	2.5	5	5
V7E-L06A-R4030-□1	124.5	94.5	30	14	22.5	2.5	5	5
V7E-L06A-R4030-□2	155.5	125.5	30	14	22.5	2.5	5	5
V7E-L06A-R6030-□1	143.5	113.5	30	14	22.5	2.5	5	5
V7E-L06A-R6030-□2	174.5	144.5	30	14	22.5	2.5	5	5

80mm flange



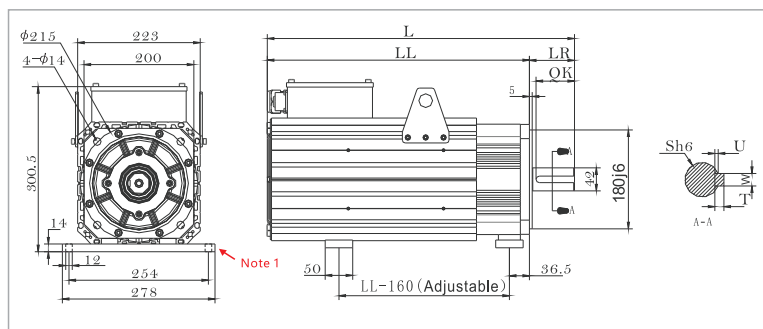
Model	L	LL	LR	S	QK	U	W	T
V7E-L08A-R7520-□1L	156	121	35	19	25	3	6	6
V7E-L08A-R7520-□2L	188	153	35	19	25	3	6	6
V7E-L08A-R7530-□1L	142	107	35	19	25	3	6	6
V7E-L08A-R7530-□2L	174	139	35	19	25	3	6	6
V7E-M08A-R7530-□1L	152	117	35	19	25	3	6	6
V7E-M08A-R7530-□2L	184.5	149.5	35	19	25	3	6	6
V7E-L08A-R7530-□1	142	107	35	19	25	3	6	6
V7E-L08A-R7530-□2	174	139	35	19	25	3	6	6
V7E-M08A-R7530-□1	152	117	35	19	25	3	6	6
V7E-M08A-R7530-□2	184.5	149.5	35	19	25	3	6	6
V7E-L08A-1R030-□1	156	121	35	19	25	3	6	6
V7E-L08A-1R030-□2	188	153	35	19	25	3	6	6

180mm flange



Model	L	LL	LR	S	QK	U	W	T
V7E-M18A-2R915-□1	266	187	79	35	65	4.3	10	8
V7E-M18A-2R915-□2	307.5	228.5	79	35	65	4.3	10	8
V7E-M18A-4R415-□1	290	211	79	35	65	4.3	10	8
V7E-M18A-4R415-□2	331.5	252.5	79	35	65	4.3	10	8
V7E-M18D-2R915-□1	266	187	79	35	65	4.3	10	8
V7E-M18D-2R915-□2	307.5	228.5	79	35	65	4.3	10	8
V7E-M18D-2R915-□1H	266	187	79	35	65	4.3	10	8
V7E-M18D-2R915-□2H	307.5	228.5	79	35	65	4.3	10	8
V7E-M18D-4R415-□1	290	211	79	35	65	4.3	10	8
V7E-M18D-4R415-□2	331.5	252.5	79	35	65	4.3	10	8
V7E-M18D-4R415-□1H	290	211	79	35	65	4.3	10	8
V7E-M18D-4R415-□2H	331.5	252.5	79	35	65	4.3	10	8
V7E-M18D-5R515-□1	325.5	246.5	79	35	65	4.3	10	8
V7E-M18D-5R515-□2	367	288	79	35	65	4.3	10	8
V7E-M18D-5R515-□1H	325.5	246.5	79	35	65	4.3	10	8
V7E-M18D-5R515-□2H	367	288	79	35	65	4.3	10	8
V7E-M18D-7R515-□1	372.5	293.5	79	35	65	4.3	10	8
V7E-M18D-7R515-□2	414	335	79	35	65	4.3	10	8
V7E-M18D-7R515-□1H	372.5	293.5	79	35	65	4.3	10	8
V7E-M18D-7R515-□2H	414	335	79	35	65	4.3	10	8
V7E-M18D-5R515-□1BH	325.5	246.5	113	42	96	4.2	12	8
V7E-M18D-5R515-□2BH	367	288	113	42	96	4.2	12	8
V7E-M18D-7R515-□1BH	372.5	293.5	113	42	96	4.2	12	8
V7E-M18D-7R515-□2BH	414	335	113	42	96	4.2	12	8

200mm flange



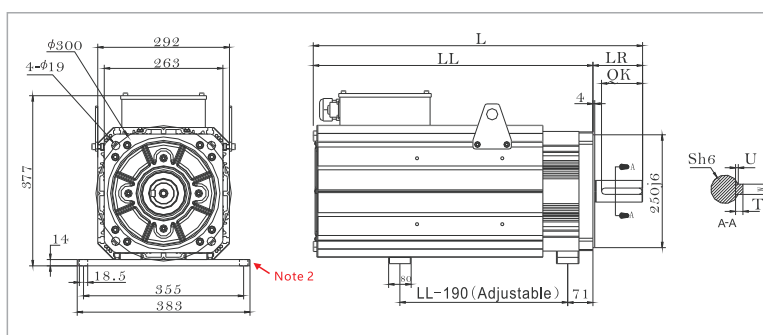
Unit: mm

Model	L	LL	LR	S	U	W	T	QK
VM7-M20D-01115-□1FN	451	369	82	42	4	12	8	70
VM7-M20D-01515-□1FN	488	406	82	42	4	12	8	70
VM7-M20D-02015-□1FN	560	478	82	42	4	12	8	70
VM7-M20D-02215-□1FN	607	525	82	42	4	12	8	70

Note 1: The foot plate of 200mm flange motor (optional).

Model code: S18 Material code: 6010000008

263mm flange



Unit: mm

Model	L	LL	LR	S	U	W	T	QK
VM7-M26D-03015-□1FN	640	530	110	48	4.5	14	9	90
VM7-M26D-03715-□1FN	684	574	110	48	4.5	14	9	90
VM7-M26D-04515-□1FN	727	617	110	48	4.5	14	9	90
VM7-M26D-05515-□1FN	795	685	110	48	4.5	14	9	90

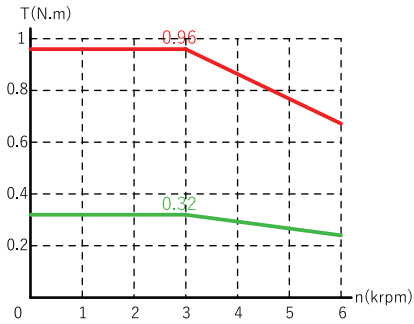
Note 2: The foot plate of 263mm flange motor (except VM7-M26D-05515 model is standard configured, other models are optional).

Model code: S25F Material code: 2800050433

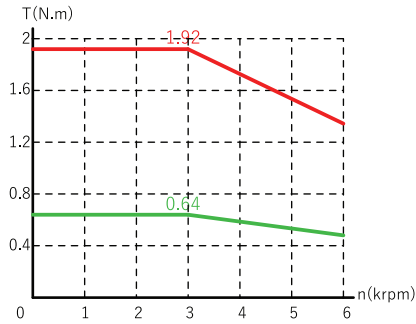
서보 모터 토크 특성

노트 : " — "는 정격 토크, " — "는 순시 최대 토크입니다.

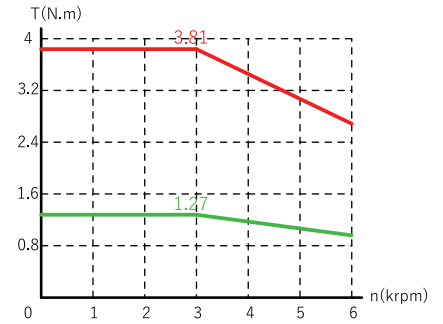
V7E-L04A-R1030-□□



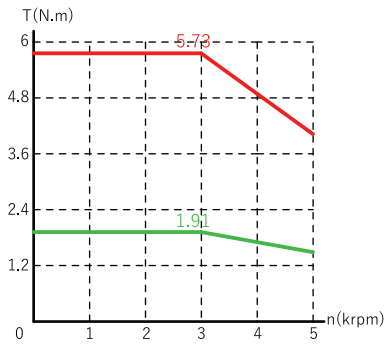
V7E-L06A-R2030-□□



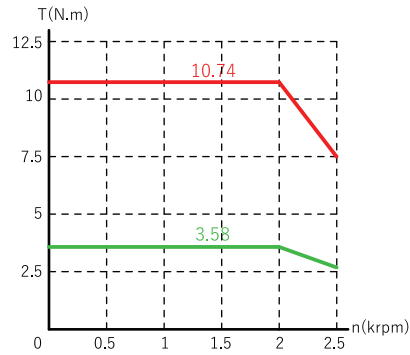
V7E-□06A-R4030-□□



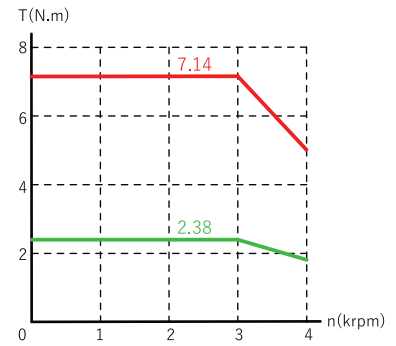
V7E-L04A-R6030-□□



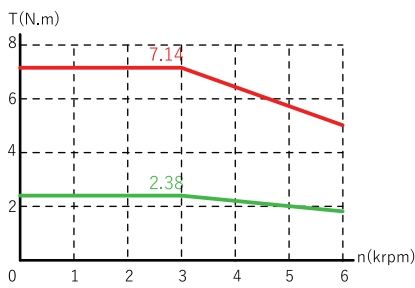
V7E-L08A-R7520-□□L



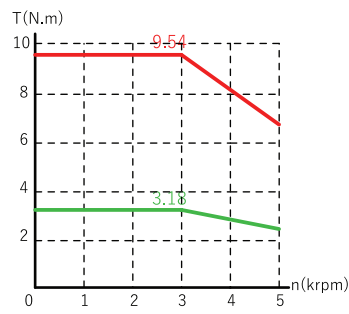
V7E-L08A-R7530-□□L



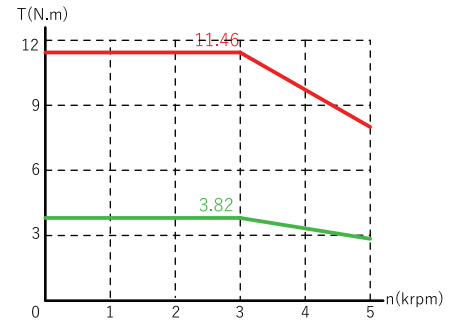
V7E-□08A-R7530-□□



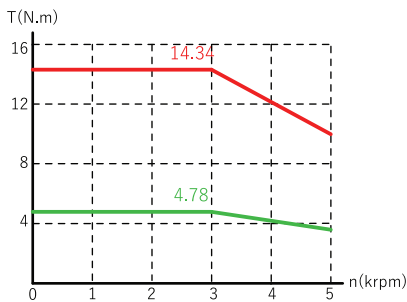
V7E-L08A-1R030-□□



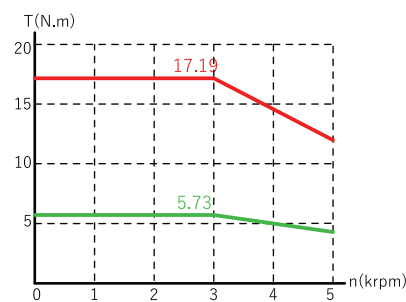
V7E-M11A-1R230-□□



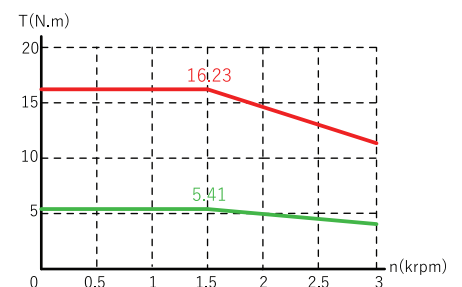
V7E-M11A-1R530-□□



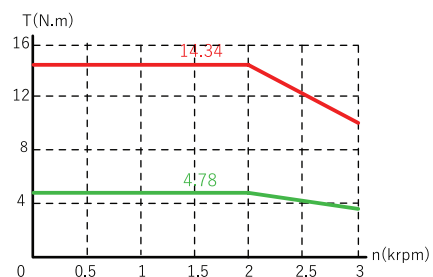
V7E-M11A-1R830-□□



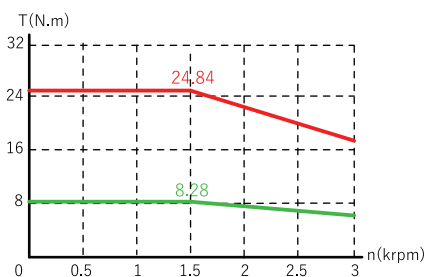
V7E-M13□-R8515-□□



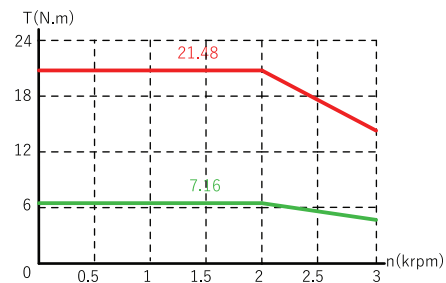
V7E-M13□-1R020-□□



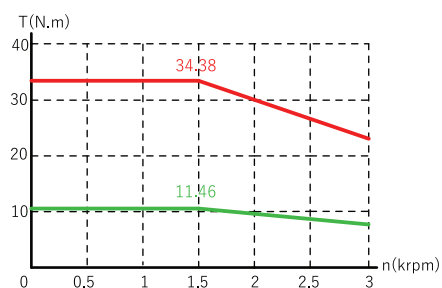
V7E-M13□-1R315-□□



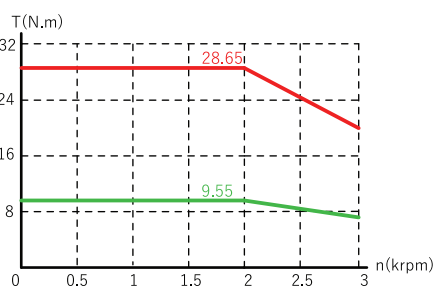
V7E-M13□-1R520-□□



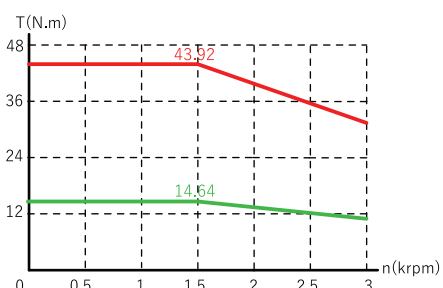
V7E-M13□-1R815-□□



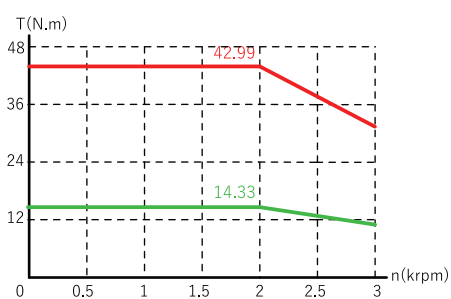
V7E-M13□-2R020-□□



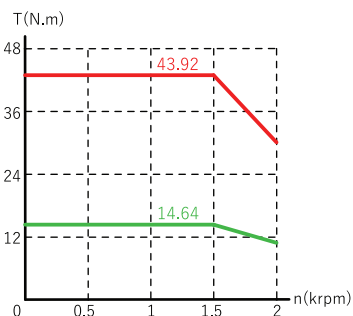
V7E-M13□-2R315-□□



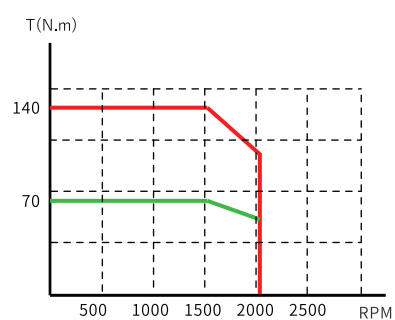
V7E-M13□-3R020-□□



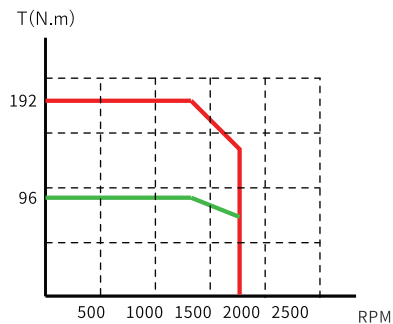
V7E-M13□-2R315-□□L



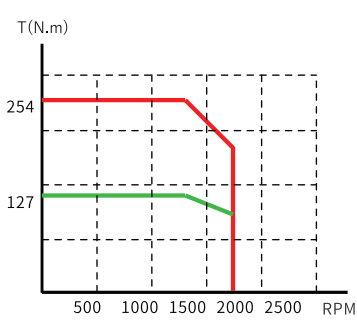
VM7-M20D-01115-□1FN



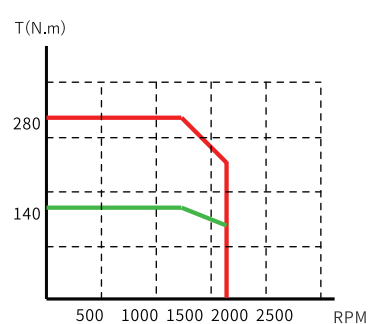
VM7-M20D-01515-□1FN



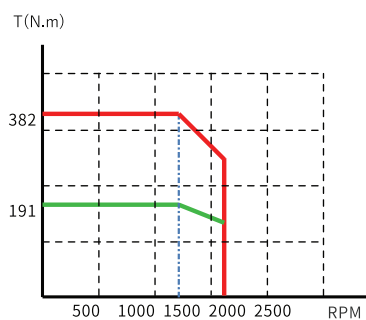
VM7-M20D-02015-□1FN



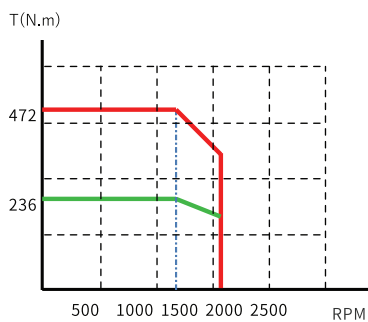
VM7-M20D-02215-□1FN



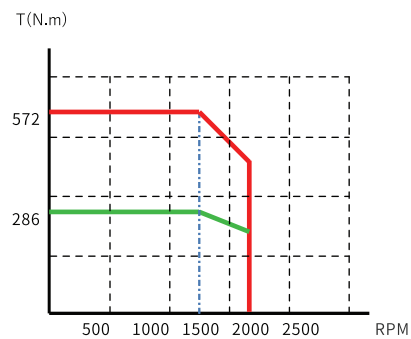
VM7-M20D-03015-□1FN



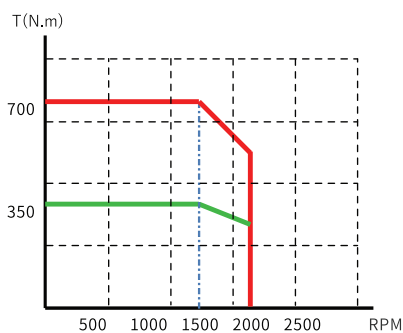
VM7-M20D-03715-□1FN



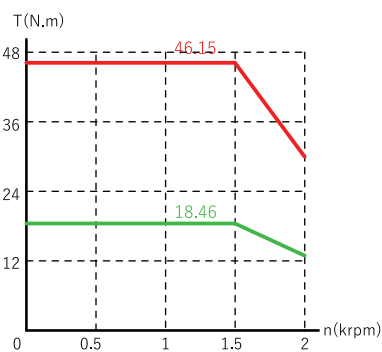
VM7-M20D-04515-□1FN



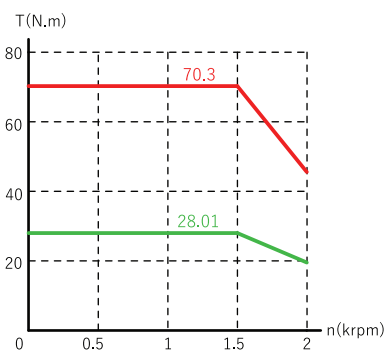
VM7-M20D-05515-□1FN



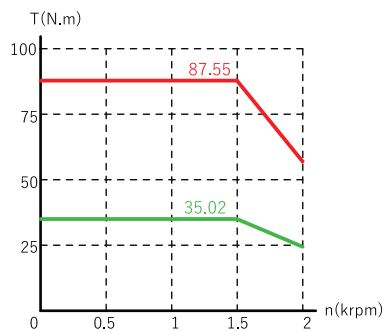
V7E-M18□-2R915-□□



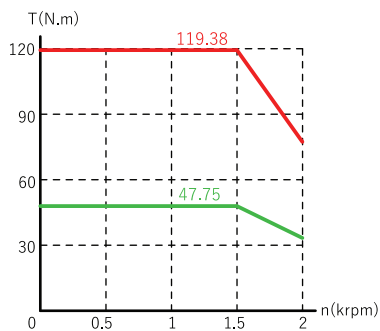
V7E-M18□-4R415-□□



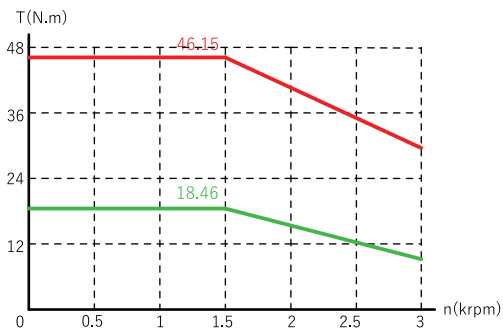
V7E-M18□-5R515-□□



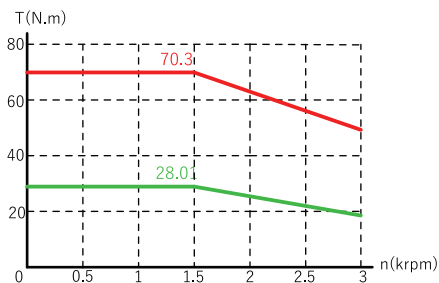
V7E-M18□-7R515-□□



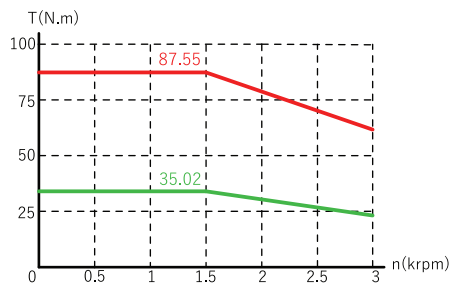
V7E-M18□-2R915-□□H



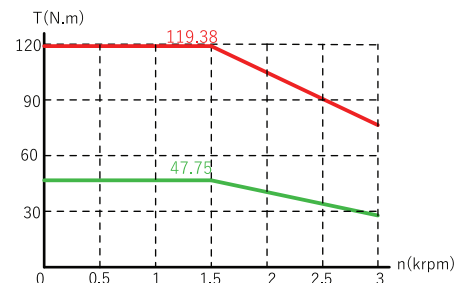
V7E-M18□-4R415-□□H



V7E-M18□-5R515-□□H



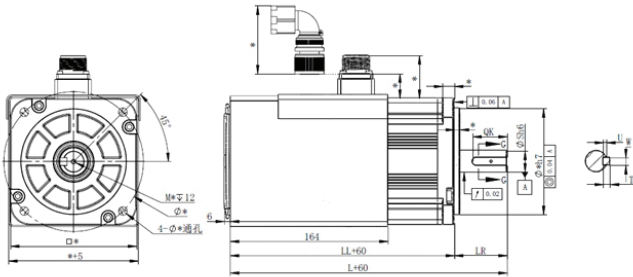
V7E-M18□-7R515-□□H



팬 칼럼

팬은 110 /130 /180 플랜지 모터의 경우 옵션입니다. 팬이 있는 모터의 경우 모델 뒤에 "F"를 추가합니다.

팬이 있는 모터 치수



모터에 팬이 장착 된 후 기계 길이가 60mm 증가하고 다른 치수는 변경되지 않습니다.

팬 사양

	F12038N27A230
Voltage level / V	230±15AC
Rated current / A	0.135A
Rated air volume / CFM	89
Rated speed / rpm	2650

제동 칼럼

	Model	Static torque / N.m	Rated voltage/ V	Rated current / A
40	Z092-S040B(24V)0.38G8.5-001	0.38	24±10%	0.25
60	Z029-S060B(24V)1.5G12	1.5	24±10%	0.32
80	Z122-S080B(24V)3.8G16-002	3.8	24±10%	0.35
110	Z029-S110B(24V)10G21	10	24±10%	0.81
130	Z092-S130B(24V)16C25-002	16	24±10%	1
180	Z176-S180(24V)50C38	50	24±10%	2

SD700 서보 드라이브 케이블 소개

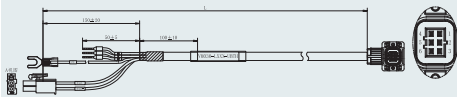
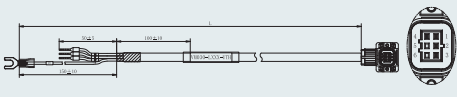
전원 케이블 이름 지정 규칙

V M 075 - L030 - A N L

① ② ③ ④ ⑤ ⑥ ⑦

① Product series	⑤ Motor end plug A: 16M-4A (4-pin integrated injection molding aviation plug) K: 3108A18-10S (4-pin curved 90 degrees aviation plug) H: 3108A20-18S (9-pin curved 90 degrees aviation plug) I: 3108A24-11S (9-pin curved 90 degrees military aviation plug, 6 welding wires, 180 brake head) O: SC-MC6S-AC (Motor connector, forward outgoing lines 6-pin) OB: same as O; with brake U: SC-MC6S-AB (Motor connector 6-pin) UB: same as U, with brake M: 3108A22-22S (4-pin curved 90 degrees aviation plug)
② Power cable	⑥ Drive end plug N: None (Bare wire / U terminal) T: Fork type cold pressed or pre-insulated tube type terminal)
③ Cable diameter 030: 0.3mm ² cable ≤ 4.5A current 050: 0.5mm ² cable ≤ 6A current 075: 0.75mm ² cable ≤ 6A current 150: 1.5mm ² cable ≤ 11A current 250: 2.5mm ² cable ≤ 18A current 400: 4mm ² cable ≤ 30A current	⑦ Cable material L: Standard cable (bending times over 2million) H: Flexible cable (bending times over 10 million)
④ Cable length L030: 3m L050: 5m L100: 10m L150: 15m L200: 20m L250: 25m L300: 30m	

모터 파워 케이블

VM030-④-UBT⑦		40 flange motor power cable (with brake)
VM030-④-UT⑦		40 flange motor power cable (without brake)

VM050-④-0BT⑦		60/80 flange motor power cable (with brake)
VM050-④-0T⑦		60/80 flange motor power cable (without brake)
VM150-④-HN⑦		110/130 flange motor power cable (with brake)
VM150-④-KN⑦		110/130 flange motor power cable
VM250-④-IN⑦		180 flange motor power cable (with brake)
VM250-④-MN⑦ VM400-④-MN⑦		180 flange motor power cable (without brake)

엔코더 케이블 이름 지정 규칙

V E 06 - L030 - 2 A N L

① ② ③ ④ ⑤ ⑥ ⑦ ⑧

① Product series	⑤ Drive end plug 2: 6 pin 1394 plug
② Encoder cable	⑥ Motor end plug A: 16M-9A (9-pin integrated injection molding aviation plug) S: SC-MC7S-A6 (7-pin motor connector)
③ Number of lines 04: 4-pin twisted shielded cable (no external battery power cable) 06: 6-pin twisted shielded cable (with external battery power cable)	⑦ Battery N: No battery D: With battery F: With battery box, but no battery (Battery free)
④ Cable length L030: 3 m L050: 5m L100: 10m L150: 15m L200: 20 m L250: 25m L300: 30m	⑧ Cable material L: Standard cable (bending times over 2 million) H: Flexible cable (bending times over 10 million) C: Hardy flexible towline cable (meet the ambient temperature of -25℃)

엔코더 케이블

VE04-④-2SN⑧		40/60/80 flange motor encoder cable (no battery)
VE06-④-2SD⑧		40/60/80 flange motor encoder cable (with battery)
VE04-④-2AN⑧		110 flange and above motor encoder cable (no battery box)
VE06-④-2AD⑧		110 flange and above motor encoder cable (with battery box)

중계 케이블

D-VM050-L020-A1-L		VM7 to V7E, 40 flange power transfer cable (0.2m)
D-VM050-L020-AB2-L		VM7 to V7E, 40 flange power transfer cable (with brake, 0.2m)
D-VM050-L020-AC1-L		VM7 to V7E, 60/80 flange power transfer cable (0.2m)
D-VM050-L020-AC2-L		VM7 to V7E, 60/80 flange power transfer cable (with brake, 0.2m)
VEF07-L020-ANL		VM7 to V7E, 40/60/80 flange encoder transfer cable (0.2m)

회생 저항 선택

Model	Braking voltage	Internal resistor	Min external resistance	Max external resistance
SD700-1R1A	380V	None	40Ω	400Ω
SD700-1R8A	380V	None	40Ω	200Ω
SD700-3R3A	380V	None	40Ω	100Ω
SD700-5R5A	380V	40Ω 60W	25Ω	70Ω
SD700-7R6A	380V	40Ω 60W	15Ω	50Ω
SD700-9R5A	380V	40Ω 60W	15Ω	40Ω
SD700-120A	380V	30Ω 200W	10Ω	30Ω
SD700-160A	380V	30Ω 200W	10Ω	30Ω
SD700-2R5D	700V	80Ω 60W	80Ω	225Ω
SD700-3R8D	700V	80Ω 60W	55Ω	180Ω
SD700-6R0D	700V	40Ω 60W	35Ω	110Ω
SD700-8R4D	700V	40Ω 60W	25Ω	85Ω
SD700-110D	700V	40Ω 60W	25Ω	70Ω
SD700-170D	700V	30Ω 200W	30Ω	50Ω
SD700-240D	700V	30Ω 200W	15Ω	40Ω
SD700-300D	700V	30Ω 200W	15Ω	30Ω
SD700-500D	700V	None	10Ω	20Ω
SD700-600D	700V	None	10Ω	20Ω
SD700-700D	700V	None	10Ω	15Ω
SD700-800D	700V	None	10Ω	15Ω
SD700-121D	700V	None	8Ω	10Ω
SD700-171D	700V	None	6Ω	8Ω

VEK

(주)베이치일렉트릭코리아

서울특별시 구로구 디지털로26길 123

지플러스타워 509호

Tel : 02-833-6663

Fax : 02-833-6667

Facebook : <http://www.facebook.com/veichigroup>

[Http://www.veichi.org/](http://www.veichi.org/)